

The inkjet printer



pictor²
INKJET MARKING BY MP

Inkjet printer

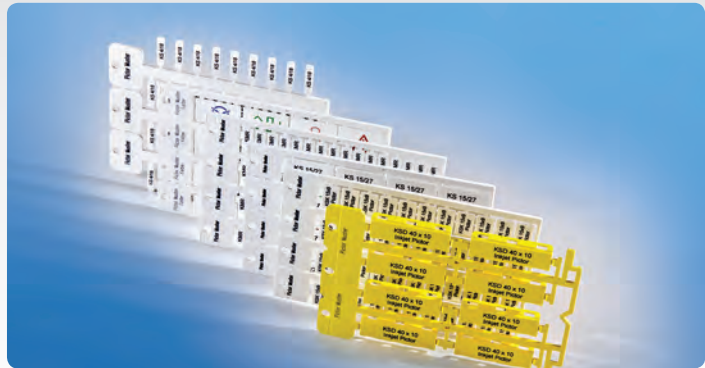


pictor²
INKJET MARKING BY MP

Fast, colourful and robust labelling

TECHNICAL DATA

Power unit	100–240 V AC universal
Print area	Approx. A3, 6 aluminium base plates
Print speed	From 90 seconds for 6 base plates
Interface	USB / LAN / WLAN
Colours	7 colour cartridges 7 cleaning cartridges 1 gloss (empty)
Print volume	Approx. 600,000 characters per cartridge (at font size 24 in the ACS software)
Print resolution	720 dpi
Nozzles per colour	180
Min drop size	1 pl (picolitre)
Ink	Special ink
Dimensions	Approx. 64 x 25 x 73 cm (W x H x D)
Weight	Approx. 20 kg



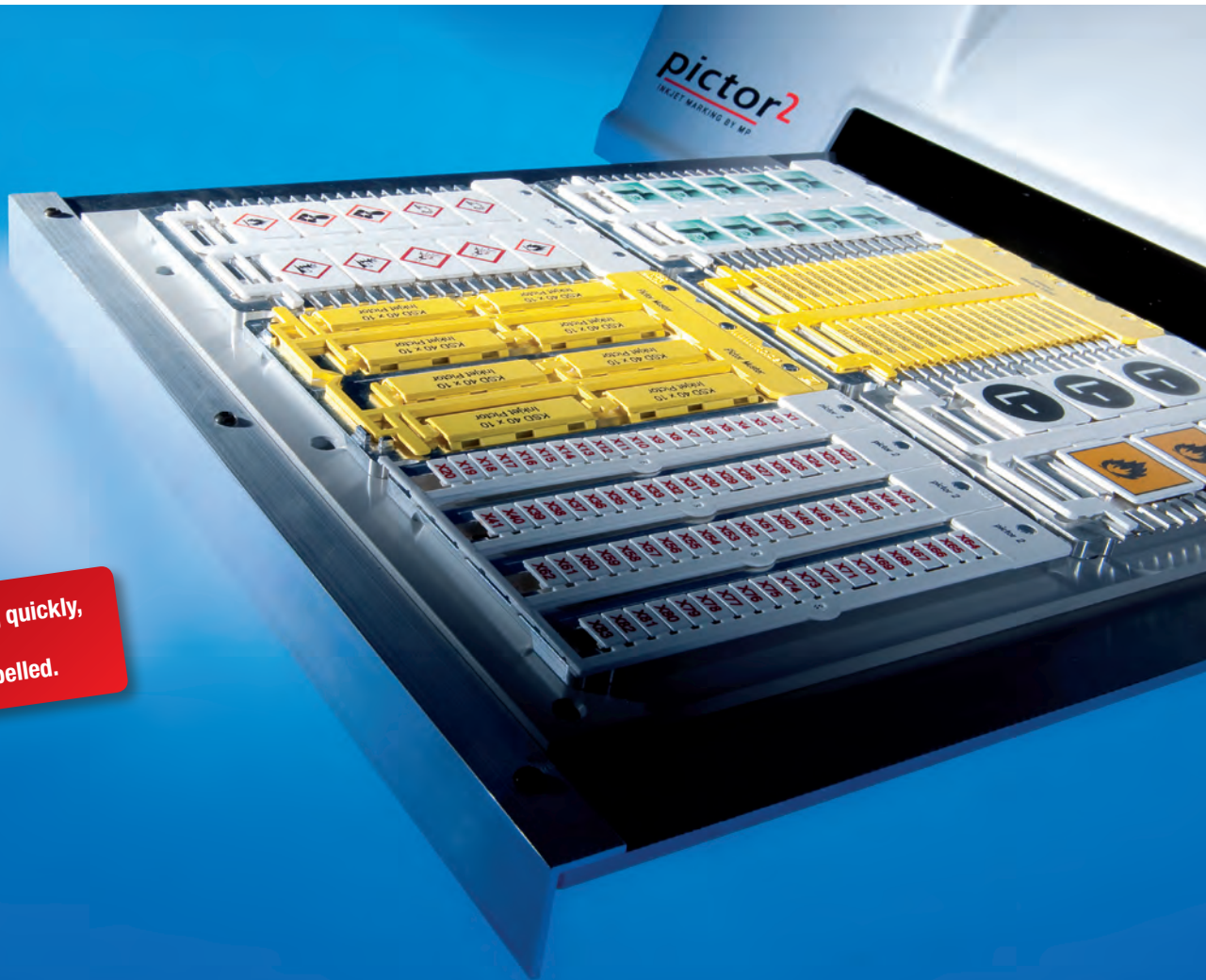
Large range of labelling materials:



Convenient operation

Wide range of materials

6 labelling mats, quickly,
colourfully and
permanently labelled.



Larger print area

THE INKJET LABEL PRINTER WITH A LARGER PRINT AREA

With a larger print area, a huge capacity of up to 600,000 characters per cartridge and an integrated WLAN and Ethernet interface, the new **pictor²** inkjet label printer by Murrplastik sets the standard for colour-based inkjet printing systems.

The labelling specialist Murrplastik Systemtechnik, Oppenweiler presents the high-end inkjet printer **pictor²**. Razor-sharp and photorealistic quality with 720 dpi and fast printing are features that the **pictor²** inherits from its predecessor.

Murrplastik's engineers have developed a new ink specifically for the **pictor²**. The robust typeface is ideal for use in tough industrial environments.

An important additional benefit is the greatly improved range of the ink, with an increase in capacity of up to 50%.

Six polycarbonate labelling mats are fixed on the base plate and labelled simultaneously within 90 seconds.

Different sign types can also be "mixed" on a single base plate. That means that your company can manufacture its entire daily requirement of labelling plates in just a few minutes with virtually no effort. The ACS labelling software can be used to read in design data through CAD interfaces.

With its attractive design and a weight of just 20 kg, the **pictor²** is the ideal desktop printer.

BENEFITS

- Photorealistic quality
- High print speed
- Robust typeface
- Easy to use
- Works with standard ACS software



Germany

Murrplastik Systemtechnik GmbH
Postfach 1143
71567 Oppenweiler
Germany
☎ +49 7191 48 20
☎ +49 7191 482 280
www.murrplastik.de
info@murrplastik.de

France

Murrtechnic S.à.r.l
Zone industrielle Sud,
6 rue Manurhin
B.P. 62, 68120 Richwiller
☎ +33 389 570 010
☎ +33 389 530 966
www.murrtechnic.eu
murrtechnic@murrtechnic.fr

America

(North and South America)

Murrplastik Systems, Inc.
1175 US Highway 50
Milford, OH 45150
☎ +1 513 201 30 69
☎ +1 215 822 76 26
www.murrplastik.com
cablegmt@murrplastik.com

Italy

Murrplastik Italia S.r.L.
Via Circo, 18
20123 Milano
☎ +39 02 856 805 70
☎ +39 02 805 034 69
www.murrplastik.it
info@murrplastik.it

Austria

Murrplastik Systemtechnik GmbH
☎ +43 732 660 870
☎ +43 732 660 872
www.murrplastik.at
info@murrplastik.at

Spain

Murrplastik S.L.
Paseo Ubarburu, 76
Pabellón 34, polígono 27
20014 San Sebastián
☎ +34 943 444 837
☎ +34 943 472 895
www.murrplastik.es
info@murrplastik.es

China

Murrplastik Asia Co., Ltd.
1802 Rm. No. 218
Hengfeng Rd.
200070 Shanghai
☎ +86 21 512 869 25
☎ +86 21 512 869 29
www.murrplastik.com.cn
info@murrplastik.com.cn

Switzerland

Murrplastik AG
Ratihard 40
8253 Willisdorf
☎ +41 52 646 06 46
☎ +41 52 646 06 40
www.murrplastik.ch
info@murrplastik.ch



12



1101DR

MP8902864056